



Product Documentation

Embarcadero® ToolBox

ToolBox User Guide

Version 1.7

Published December 1, 2009

© 2009 Embarcadero Technologies, Inc. Embarcadero, the Embarcadero Technologies logos, and all other Embarcadero Technologies product or service names are trademarks or registered trademarks of Embarcadero Technologies, Inc. All other trademarks are property of their respective owners.

This software/documentation contains proprietary information of Embarcadero Technologies, Inc.; it is provided under a license agreement containing restrictions on use and disclosure and is also protected by copyright law. Reverse engineering of the software is prohibited.

If this software/documentation is delivered to a U.S. Government Agency of the Department of Defense, then it is delivered with Restricted Rights and the following legend is applicable:

Restricted Rights Legend Use, duplication, or disclosure by the Government is subject to restrictions as set forth in subparagraph (c)(1)(ii) of DFARS 252.227-7013, Rights in Technical Data and Computer Software (October 1988).

If this software/documentation is delivered to a U.S. Government Agency not within the Department of Defense, then it is delivered with Restricted Rights, as defined in FAR 552.227-14, Rights in Data-General, including Alternate III (June 1987).

Information in this document is subject to change without notice. Revisions may be issued to advise of such changes and additions. Embarcadero Technologies, Inc. does not warrant that this documentation is error-free.

Embarcadero Technologies, Inc. is a leading provider of award-winning tools for application developers and database professionals so they can design systems right, build them faster and run them better, regardless of their platform or programming language. Ninety of the Fortune 100 and an active community of more than three million users worldwide rely on Embarcadero products to increase productivity, reduce costs, simplify change management and compliance and accelerate innovation. The company's flagship tools include: Embarcadero® Change Manager™, CodeGear™ RAD Studio, DBArtisan®, Delphi®, ER/Studio®, JBuilder® and Rapid SQL®. Founded in 1993, Embarcadero is headquartered in San Francisco, with offices located around the world. Embarcadero is online at www.embarcadero.com.

CORPORATE HEADQUARTERS
100 CALIFORNIA STREET
12TH FLOOR
SAN FRANCISCO, CALIFORNIA
94111 USA

EMEA HEADQUARTERS
YORK HOUSE
18 YORK ROAD
MAIDENHEAD, BERKSHIRE
SL6 1SF, UNITED KINGDOM

ASIA-PACIFIC HEADQUARTERS
L7. 313 LA TROBE STREET
MELBOURNE VIC 3000
AUSTRALIA

Contents

Welcome to Embarcadero Toolbox	4
Release Notes and FAQs	4
Setting Up All-Access ToolBox and Licenses	5
Setting Up in Network Licensing Mode	5
To set up the ToolBox in network licensing mode	5
Setting Up in Workstation Mode	6
To set up the ToolBox in workstation mode (All-Access)	6
Setting Up in USB Mode	6
To set up the ToolBox in USB mode	7
Using Trial Licenses	7
To get trial licenses	8
Using the ToolBox	9
Installing Products	10
To install a standard executable	11
To launch an InstantOn executable	12
Running Products	12
To run a product from the ToolBox	12
To run a product from the Product Preferences page	13
Managing Products	13
To specify the default version to launch	13
To check for and upgrade products	14
To remove products	14
To get documentation	14
Configuring the ToolBox	15
To change the ToolBox language	15
To show or hide product descriptions	15
To specify the product download directory in workstation mode	16
To specify the ToolCloud in network mode	17
Manually Specifying Product Directories in Workstation Mode	17

WELCOME TO EMBARCADERO TOOLBOX

Embarcadero ToolBox lets you access a wide range of applications from a single launch point. It allows you to launch, install, update, and select product versions, all from a single user interface; and can be configured to run standalone and receive products from Embarcadero, or to run with a ToolCloud that manages products on your own network.

The ToolBox is offered in three different deployment modes:

- **Network Licensing Mode:** The ToolBox communicates with a ToolCloud to run the available products.
- **Workstation Mode:** The ToolBox runs independent of a ToolCloud.
- **USB Mode:** The ToolBox runs from a portable USB device, independent of a ToolCloud. This is a temporary mode that has a fixed expiration date.

RELEASE NOTES AND FAQs

For information about technical requirements and known issues, consult the Read Me notes at: <http://docs.embarcadero.com>.

For more information, see the [wiki FAQs](#).

SETTING UP ALL-ACCESS TOOLBOX AND LICENSES

All-Access ToolBox is available in three different modes, and how you set it up differs slightly between these modes.

- [Setting Up in Network Licensing Mode](#)
- [Setting Up in Workstation Mode](#)
- [Setting Up in USB Mode](#)
- [Using Trial Licenses](#)

SETTING UP IN NETWORK LICENSING MODE

In network licensing mode, you connect to a ToolCloud using a Web browser and download the ToolBox. The ToolCloud handles the licensing, and you can immediately begin using the applications that are available on the ToolCloud. You need to know the host address for the ToolCloud.

TO SET UP THE TOOLBOX IN NETWORK LICENSING MODE

- 1 Contact your ToolCloud administrator for the host address of the ToolCloud and your login information.
- 2 Connect to the ToolCloud using your Web browser and log in when prompted.

The ToolCloud appears. The ToolCloud lists the available ToolBoxes by platform, language, and version.

- 3 Click **Download** on the right-hand side of the screen to begin downloading the ToolBox.

The ToolBox executable downloads to your machine. The location depends on your browser setting.

- 4 Double-click the ToolBox executable.

The ToolBox launches and connects to the ToolCloud.

- 5 Double-click the product you want to run.

If a product icon is greyed out, it is not available. For more information, contact your ToolCloud administrator.

SETTING UP IN WORKSTATION MODE

In workstation mode, you launch the ToolBox from your desktop and it opens locally installed products; it does not connect to a ToolCloud. Each application must be licensed and activated before it will run.

When you purchase All-Access licenses, you receive an email containing a pass code. You use the pass code on the All-Access Members page to obtain serial numbers for each product. Then you use each product's Registration Wizard to enter the serial number and activate the product.

TO SET UP THE TOOLBOX IN WORKSTATION MODE (ALL-ACCESS)

- 1 Obtain an All-Access pass code from your Embarcadero representative.
- 2 Navigate to the All-Access Members page, <https://members.embarcadero.com/Allaccess.aspx>, and log on using your Developer Network credentials.

If you need a Developer Network account, click that link first and create your account.

- 3 In the **Enter your Passcode** field, enter the pass code.
- 4 Click **Add**.
- 5 Click the **Get Your Serial Number** link associated with the product for which you are obtaining a serial number.

The link is replaced with a valid serial number.

- 6 Double-click the ToolBox executable.

The ToolBox opens.

- 7 Double-click the application.

The **Registration** wizard automatically appears when you start an application that has not been activated.

- 8 Follow the instructions in the wizard to use the serial number and activate the application.

SETTING UP IN USB MODE

In USB mode, the applications are provided in file system format on a portable device, and you launch the ToolBox from the USB device. The licenses have a fixed expiration date.

TO SET UP THE TOOLBOX IN USB MODE

- 1 Insert the USB device.
- 2 Double-click the ToolBox executable on the USB device.
The ToolBox launches.
- 3 Double-click the product you want to run.

USING TRIAL LICENSES

You can obtain trial licenses for Embarcadero products from the ToolBox.

Get Trial Licenses

Request Trial Licenses for:

Name	Version	Expiration date	Status
All-Access Platinum Trial			
3rdRail™	2.0		
C++Builder®	2009 Upd...		
C++Builder®	2010 Upd...		
DBArtisan®	8.6.1		
DBArtisan®	8.6.2		
DBArtisan®	8.6.4		
DBArtisan®	8.7		
Delphi for PHP®	2.1		
Delphi Prism™	2010		
Delphi Prism™	May 2009		
Delphi®	2009 Upd...		
Delphi®	2010 Upd...		
Embarcadero® Change Manager™	5.0.3		

Embarcadero Developer Network Account Details:

Login or Email:

Password:

[I need to create an Embarcadero Developer Network \(EDN\) account](#)

[I have an Embarcadero Developer Network \(EDN\) account, but I've lost my password](#)

Request Trial **Close**

TO GET TRIAL LICENSES

- 1 At the bottom left corner of the ToolBox, click **Get Trial Licenses**.

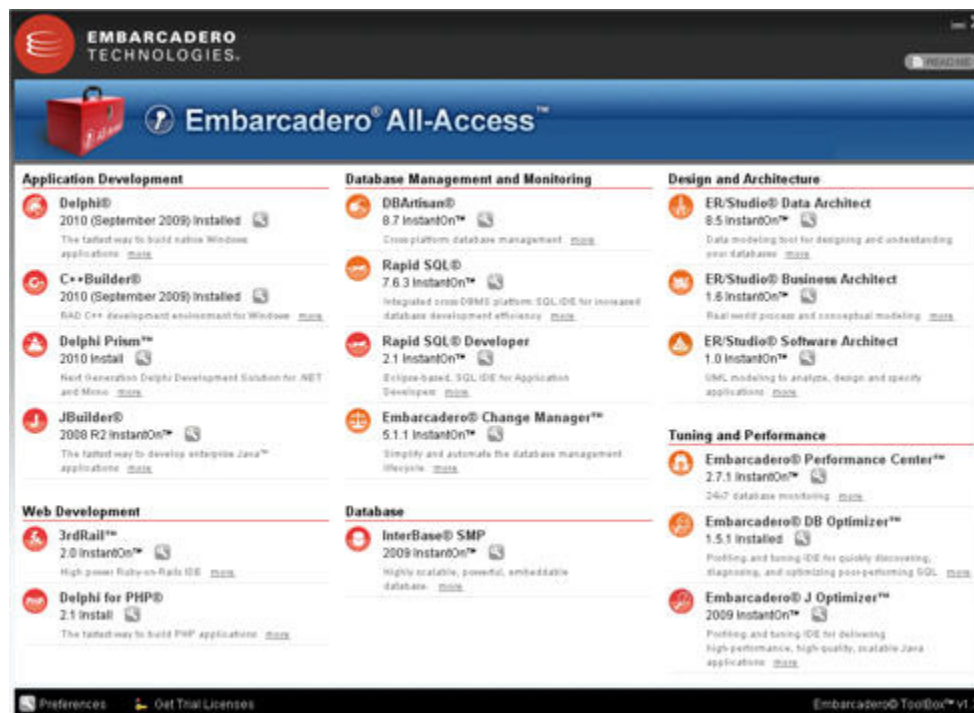
If you have not already done so, use the relevant links at the bottom of the screen to register at the Embarcadero Developer Network (EDN) and get your login ID and password.

- 2 Enter your EDN login ID and password.
- 3 At the bottom right corner of the ToolBox, click **Request Trial**.

Embarcadero will supply time-limited trial licenses for all listed products.

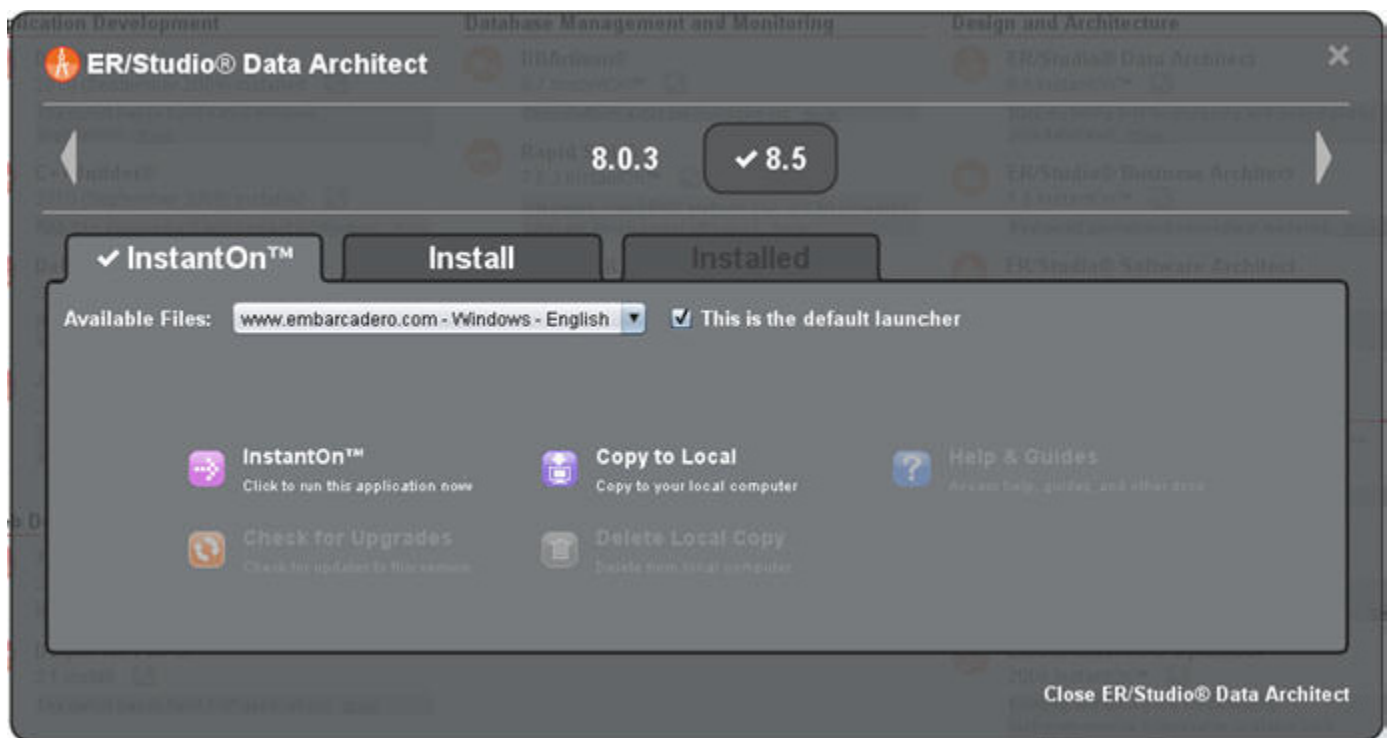
USING THE TOOLBOX

The ToolBox lists products grouped by functional categories. You can download, launch, or read about each product.



For each product, the ToolBox displays the type of executable and version that is available to you. Clicking the **more** button displays a brief overview of the product.

The wrench icon  opens the **Product Preferences** page, which helps you manage the application.



The bar along the top of the **Product Preferences** page displays the available versions of the product.

The tabs contain options for the product:

- The **InstantOn** tab contains the InstantOn application options.
- The **Install** tab contains the standard installation options.
- The **Installed** tab contains options for the standard product executables that have been downloaded or placed in the download directory. For related information, see [To specify the product download directory in workstation mode](#).
- The **Close Product Name** button on the lower right closes the **Product Preferences** page.

INSTALLING PRODUCTS

You can install products using the **Product Preferences** page.

There are two types of product executables you can install:


- **Standard Product**

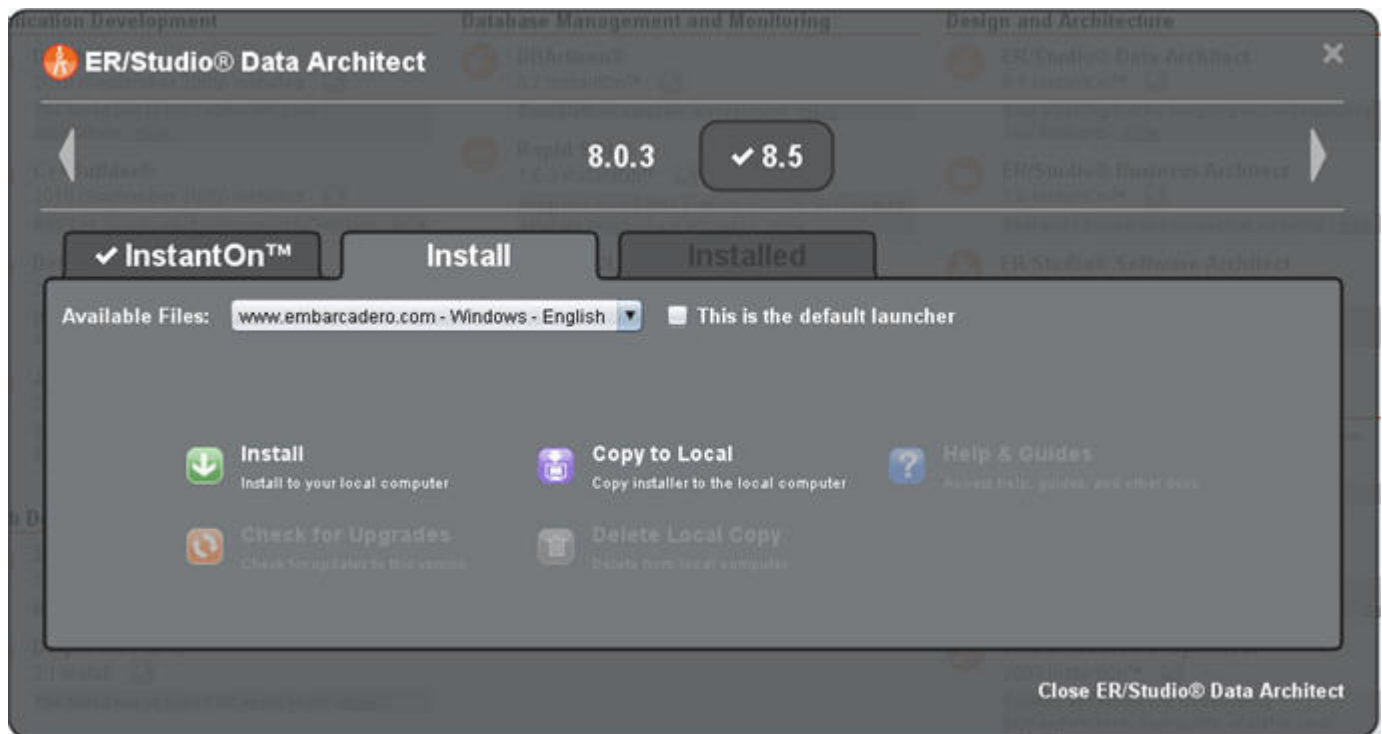
In workstation mode, you can install the standard product executable locally and can then click to launch it from the ToolBox.

- **InstantOn**

If an InstantOn executable is not available from a ToolCloud in network mode, you can install it locally. InstantOn is a special version of the application that runs within its own virtualized environment, without sharing DLLs or system-wide settings that could conflict with other applications. This provides faster, click-and-run functionality.

TO INSTALL A STANDARD EXECUTABLE


- 1 In the ToolBox, locate the application you wish to install and click its wrench icon .
- 2 Click the version you want to use.
- 3 Click the **Install** tab.



- 4 To download the product files and install them on your local machine, click **Install**.

Alternatively, to copy the installation executable to your machine and not immediately run it, click **Copy to Local**.

TO LAUNCH AN INSTANTON EXECUTABLE

- 1 In the ToolBox, locate the application you wish to use and click its wrench icon  .
- 2 Click the version you want to use.
- 3 Click the **InstantOn** tab.
- 4 To launch the product, click **InstantOn**.

The first time, you are prompted to download the InstantOn executable. Click **Yes**.

Subsequently, the InstantOn executable will launch.

- 5 Alternatively, to download the InstantOn files without launching, click **Copy to Local**.

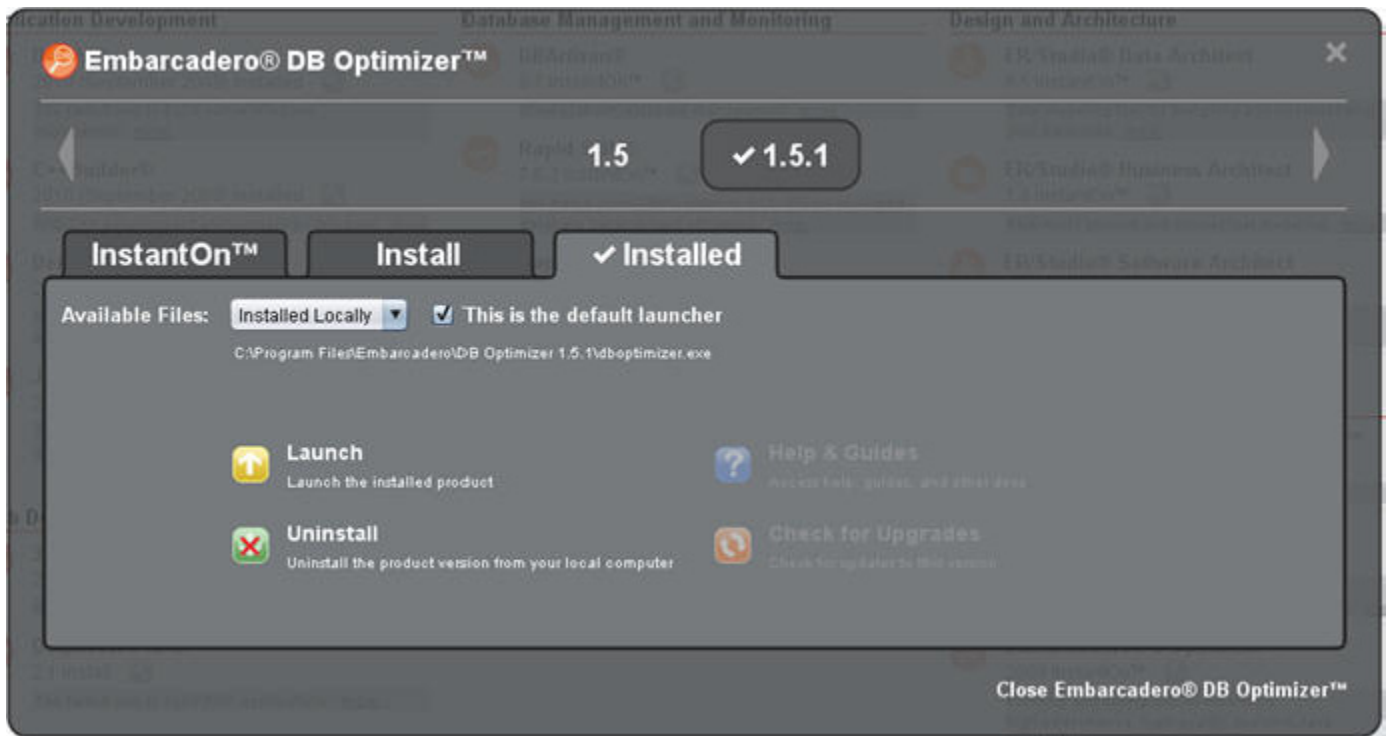
RUNNING PRODUCTS


You can run or launch products from the ToolBox main window or from the **Product Preferences** page.

TO RUN A PRODUCT FROM THE TOOLBOX

In the ToolBox main page, locate the application and click the version.

TO RUN A PRODUCT FROM THE PRODUCT PREFERENCES PAGE




- 1 Locate the application you wish to install and click its wrench icon .
- 2 Click the version you want to use.
- 3 Click the **Installed** tab.
- 4 Click **Launch**.

MANAGING PRODUCTS


You can manage which products are launched and upgrade, remove, or learn about them from the **Product Preferences** window.

TO SPECIFY THE DEFAULT VERSION TO LAUNCH


- 1 In the ToolBox main page, locate the product and click its wrench icon .
- 2 Click the version.
- 3 Click the **Installed** tab.

- 4 Select the application from the **Available Files** list.
- 5 Select the **This is the Default Launcher** check box.


TO CHECK FOR AND UPGRADE PRODUCTS

- 1 In the ToolBox main page, locate the product and click its wrench icon  .
- 2 Click the version you want to upgrade.
- 3 Click the **InstantOn**, **Install**, or **Installed** tab.
- 4 Click **Check for Upgrades**.

TO REMOVE PRODUCTS

- 1 In the ToolBox main page, locate the product and click its wrench icon  .
- 2 Click the version you want to delete.
- 3 Click the **InstantOn**, **Install**, or **Installed** tab.
- 4 Click **Delete Local Copy** or **Uninstall**.

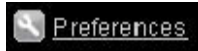
TO GET DOCUMENTATION

- 1 In the ToolBox main page, locate the product and click its wrench icon  .
- 2 Click the version you want to use.
- 3 Click the **InstantOn**, **Install**, or **Installed** tab.
- 4 Click **Help & Guides**. If documentation is not available, this option is greyed out.

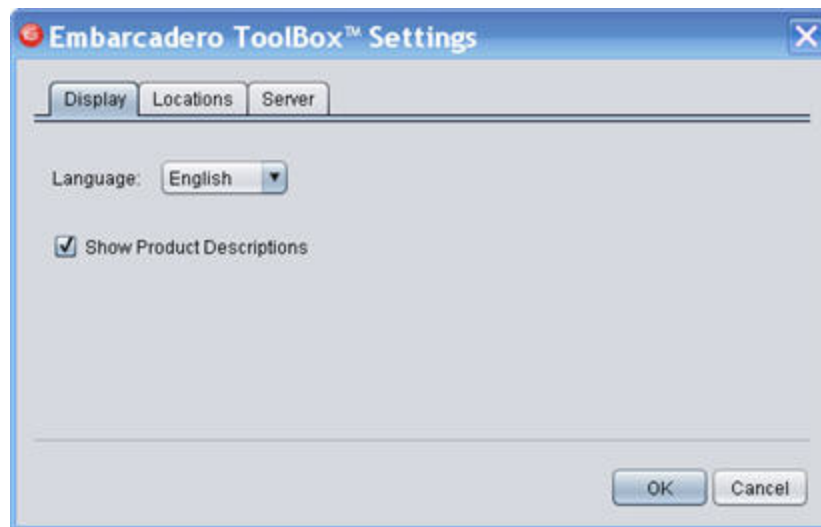
CONFIGURING THE TOOLBOX

You can modify the language used by the ToolBox, and show or hide product descriptions. If you are using workstation mode, you can specify the location of the product repository on disk. If you are using network mode, you can specify the connection to the ToolCloud.

Access ToolBox settings from the **Preferences** link at the bottom of the main page.



TO CHANGE THE TOOLBOX LANGUAGE

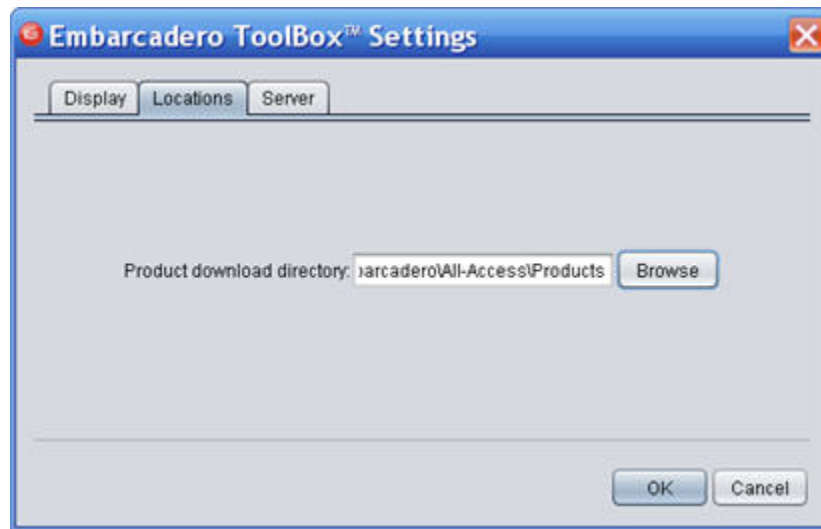


- 1 From the bottom left-hand corner of the ToolBox, click **Preferences**.
- 2 If it is not already shown, click the **Display** tab.
- 3 From the **Language** list, choose **English**, **Japanese**, **French**, or **German**.
- 4 Click **OK**.

TO SHOW OR HIDE PRODUCT DESCRIPTIONS

- 1 On the bottom left-hand corner of the ToolBox, click **Preferences**.
- 2 If it is not already shown, click the **Display** tab.
- 3 Select or clear the **Show Product Descriptions** check box.
- 4 Click **OK**.

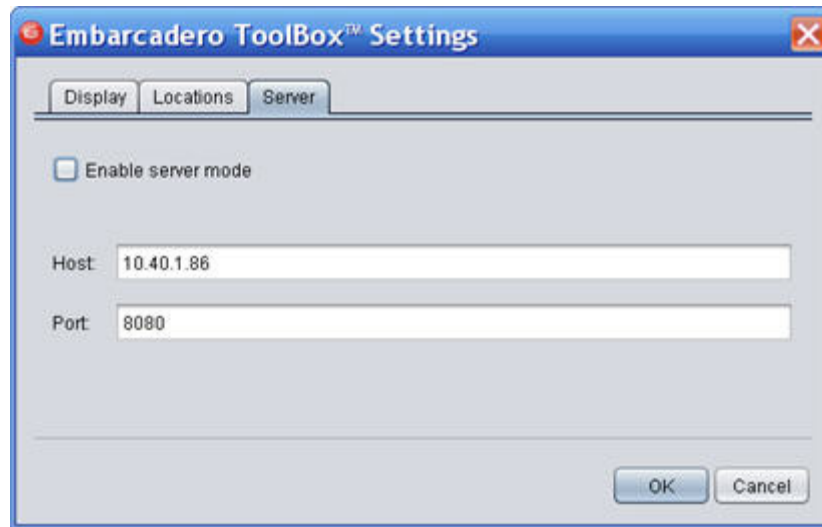
TO SPECIFY THE PRODUCT DOWNLOAD DIRECTORY IN WORKSTATION MODE



- 1 From the bottom left-hand corner of the ToolBox, click **Preferences**.
- 2 Click the **Locations** tab.
- 3 Click **Browse** and select a directory.
- 4 Click **OK**.

All product downloads will be placed in the directory you selected.

TO SPECIFY THE TOOLCLOUD IN NETWORK MODE



- 1 From the bottom left-hand corner of the ToolBox, click **Preferences**.
- 2 Select the **Server** tab.
- 3 Click **Enable server mode**, if it is not already selected. If you are switching into network mode from another mode, select this check box.
- 4 Enter the host name and port of the ToolCloud. If you do not know this information, contact your ToolCloud administrator.
- 5 Click **OK**.
- 6 Restart the ToolBox and it will connect to the ToolCloud.

MANUALLY SPECIFYING PRODUCT DIRECTORIES IN WORKSTATION MODE

You may have pre-existing Embarcadero products on your local machine, and the ToolBox needs a mechanism for finding product executables. The wsproducts.xml file specifies where the ToolBox can find and display locally-available products. It is located at::

```
c:\Documents and Settings\user_name\Local Settings\Application  
Data\Embarcadero\All-Access Client\wsproducts.xml
```

Follow the XML conventions in the file to update it for your local installations.

For more information, see the [wiki FAQs](#).